



# Dinky Squirrel

by Jo Carter

## YOU WILL NEED:

Orange smooth fur fabric A (for main body): approx. 35cm x 45cm (14in x 18in)  
White smooth fur fabric B (for snout and stomach): approx. 25cm (10in) square  
Textured long-pile orange fur fabric C (for tail): 20cm (8in) square  
Black embroidery thread  
Pair of 9mm plastic safety eyes

### From your stash:

Matching sewing thread  
Polyester toy filling  
Basic sewing kit

## FINISHED SIZE:

Approx: 22cm (8½in)

The safety eyes are not suitable for children under 3 years of age, as an alternative the eyes can be embroidered using the black thread.

## NOTES:

Seam allowance is 6mm (¼in), unless otherwise noted.  
Templates include seam allowances, unless otherwise noted.

RST = right sides together

Arrows on the templates indicate print/pile direction for marking and cutting out.

As the ears, arms and tail are sewn directly into seams it is advisable to sew over the joins to make sure they are well secured and to reduce the likelihood of them being pulled out.

Remember: When the pattern specifies 'cut 2' or more of a pattern piece the template needs to be turned over halfway through marking out so that the second half are cut as mirror-images to the first.

When clipping always take care to avoid any stitching.

## PREPARATION:

1. Begin by tracing and cutting out the templates, including the tail template. Next, draw out the pattern pieces onto the reverse of the fabric positioning them as closely together as possible and checking that they all fit before cutting. Cut out as follows:

### From orange smooth fur fabric A:

Cut 4 Ear  
Cut 1 Middle Face (remember to mark the eyes)  
Cut 2 Side Face  
Cut 2 Back Head  
Cut 2 Side Body  
Cut 2 Arm  
Cut 2 Inner Leg

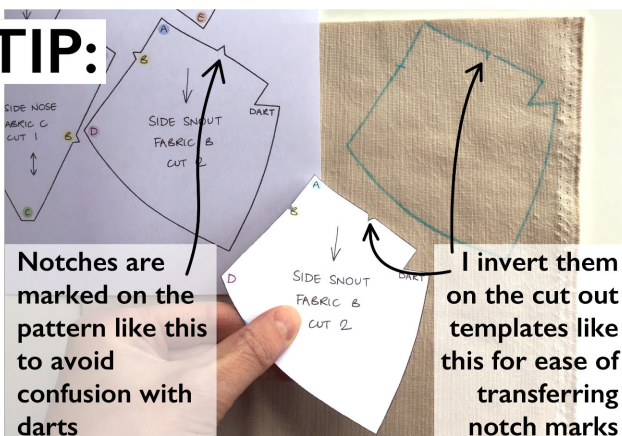
### From white smooth fur fabric B:

Cut 2 Snout  
Cut 2 Stomach

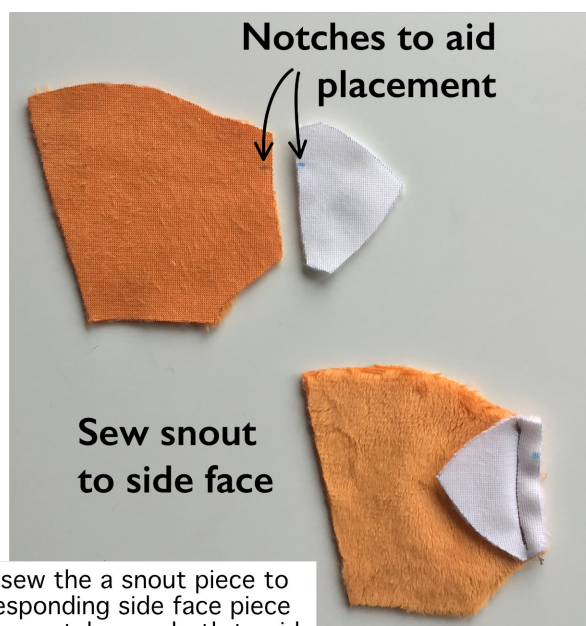
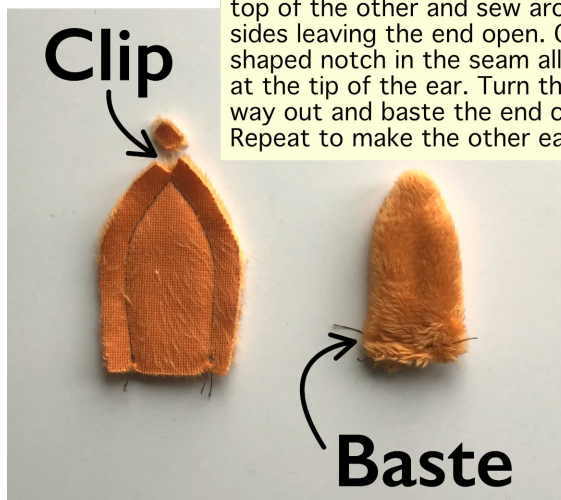
### From textured fur fabric C:

Cut 1 20cm (8in) square from which to make the tail, see steps 16 and 18 for further instructions

## TIP:



2. RST, place two ear pieces one on top of the other and sew around the sides leaving the end open. Clip a 'V' shaped notch in the seam allowance at the tip of the ear. Turn the right way out and baste the end closed. Repeat to make the other ear.



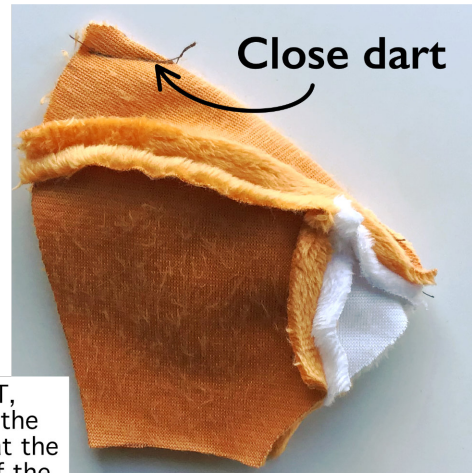
3. RST, sew the a snout piece to its corresponding side face piece (there are notches on both to aid correct match). Repeat for the other snout and side face pieces.



## Sew side face sections to middle face



4. RST, sew a side face section to its corresponding side of the middle face. Repeat for the other side.

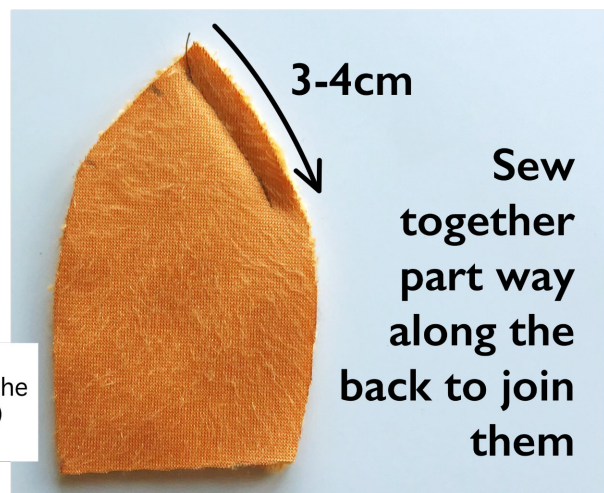


5. RST, close the dart at the top of the middle face.

## Baste ears in place



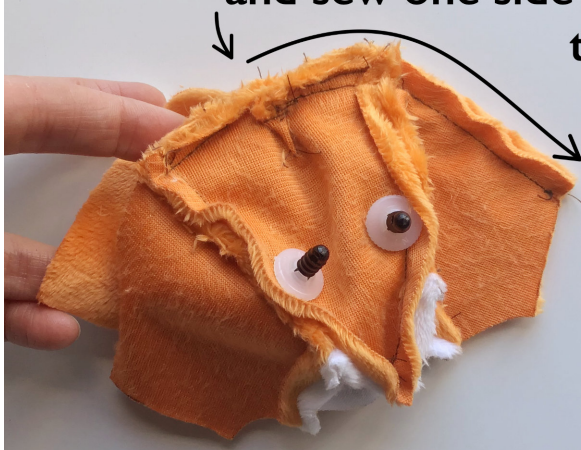
6. With the ears against the right side of the face, baste into position where marked. Make the smallest holes possible through which to allow the shank of the eye in the middle face piece where marked. Fit the backs (flat side down) onto the eyes as tightly as possible.



7. RST, place the back head pieces one on top of the other and sew together along the back (notches for the ears etc indicate the side, no notches along the back) from the top down for 3-4cm to partially join them.

8. RST line up the dart at the top of the middle face with the central seam in the back head and from this top point, sew the face and back head together down one side. Return to the top point and sew the remaining side together. Sewing the seam in two parts in this way is easier and helps to ensure a more even finish.

## Start at the top centre and sew one side at a time

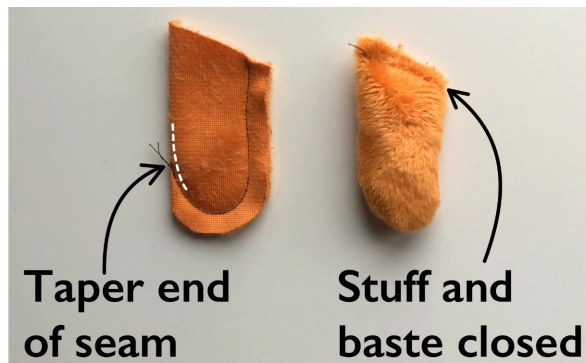
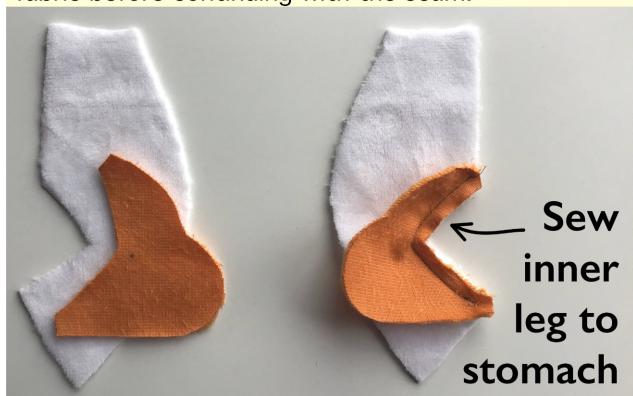


9. RST, sew the front of the face together between the bottom of the nose and the neck edge.

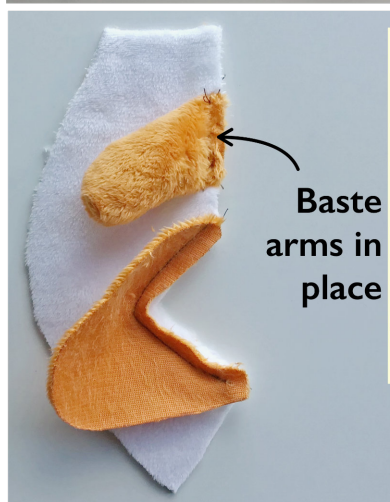




10. RST, sew an inner leg to its corresponding stomach piece pausing with the needle down through the fabric at the pivot point and lifting the presser foot to re-adjust the fabric before continuing with the seam.



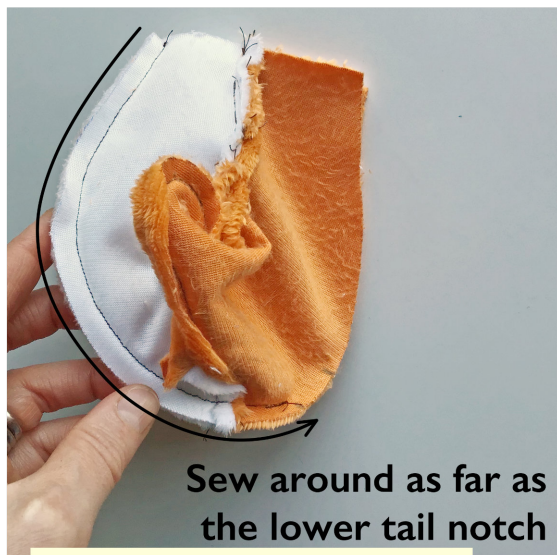
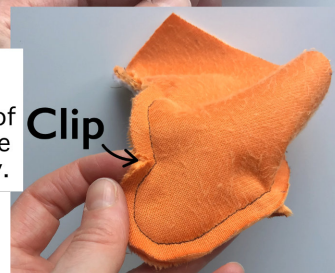
11. RST, fold an arm piece in half and sew along the side and around the rounded end tapering the end of the seam into the fold so that it forms a smooth curve. Turn the right way out, stuff lightly and baste the end closed. Repeat for the other arm.



12. With the arms against the right side of the stomach pieces and the folded sides facing in the direction of the head, baste into position where marked.



13. RST, sew a side body piece to its corresponding stomach section from the top all the way around the leg and finishing at the back of the body. Clip the internal corner at the top of the foot. Repeat for the other stomach and side body.

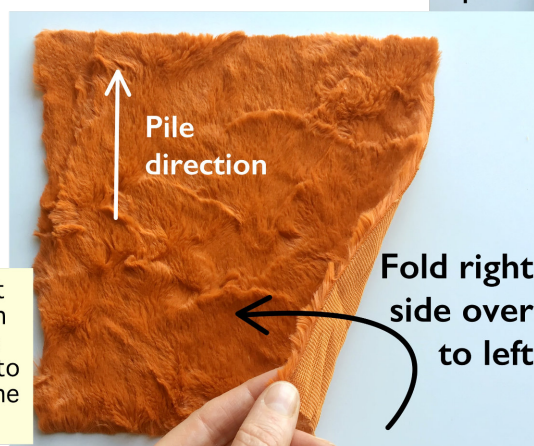


14. RST, sew the stomach pieces together along the front and around as far as the lower tail notch.



15. RST, sew the bottom of the head to the top of the body.

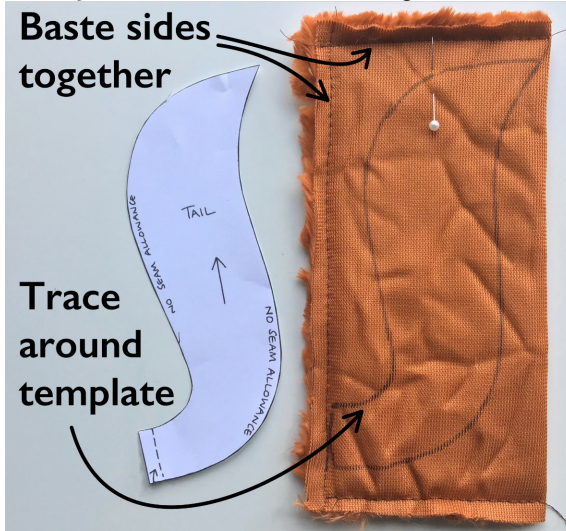
Mark the top with a pin



16. Position the tail square right side up so that the pile direction runs vertically upward. Take the right hand side and fold it over to meet the left hand side, mark the front top with a pin or similar.



17. Using a long stitch length, baste the long sides together and then each of the short ends to hold the folded fabric in position (it's easiest to do in 3 parts like this so that the fabric doesn't twist). Use the pin to locate the front top and then centre the tail template on the fabric leaving a good border all around the edges and draw around it. No seam allowance is included around the sides of the tail, sew directly over the tail outline leaving the short end free.



18. Cut out the tail leaving at least the 6mm seam allowance around all sides apart from the short end where a seam allowance has been included. Turn the right way out (no need to clip the seam allowance around the curves) and stuff. Baste the end of the tail closed.

20. Close the remaining part of the back head and finish to leave a 5-6cm opening in the back of the body.



19. RST, put the tail inside the body so that the end is sandwiched in the seam allowance where marked. Sew the lower back together from the bottom to just above the tail so that the tail is fully machine-sewn in place.



21. Turn the right way out and stuff the head only. Using black embroidery thread (6 strand thickness) embroider a nose and mouth on the snout.



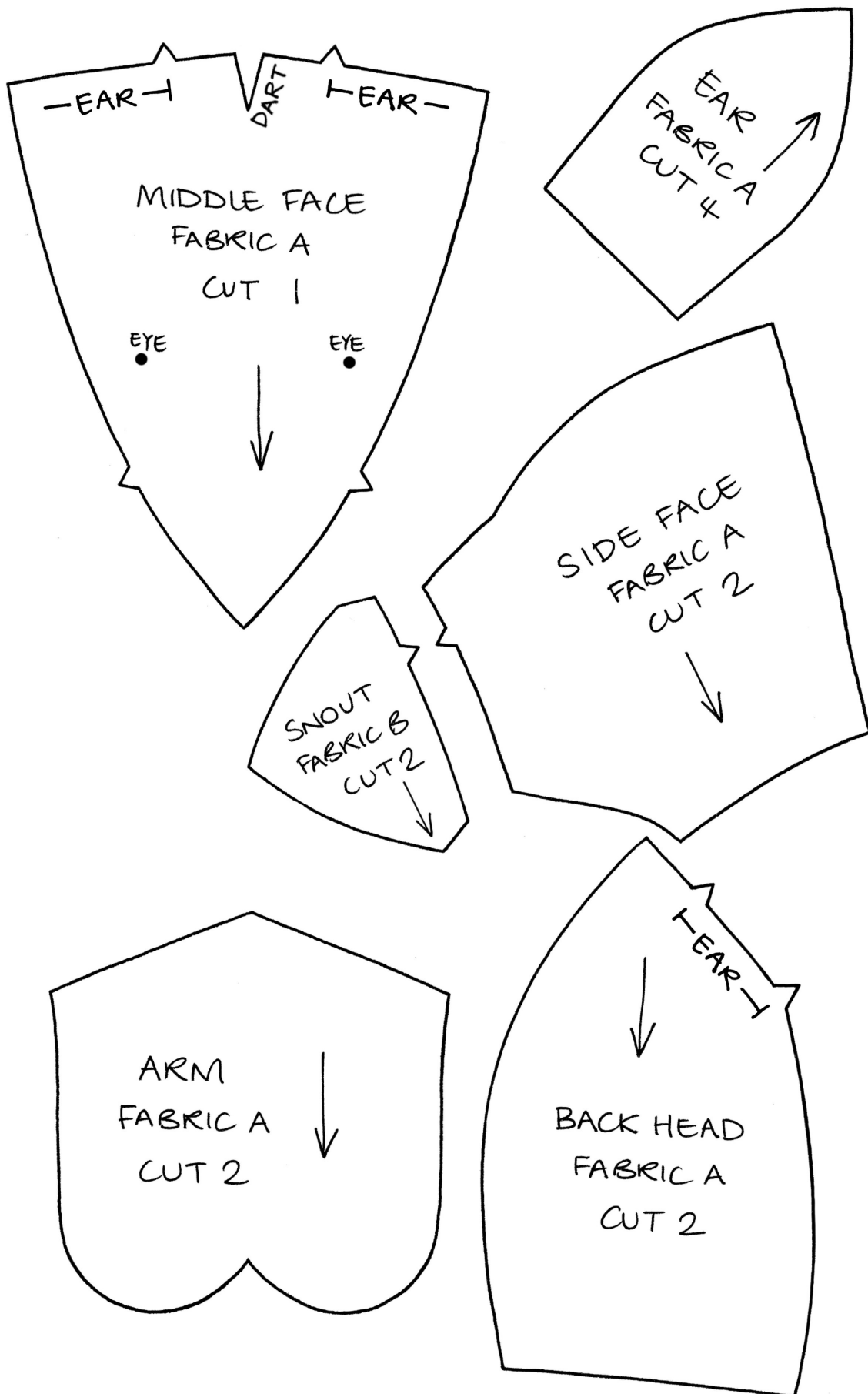
22. Hand-sew some internal shaping in between the eyes to give the face a little more character. Bring the needle out at the inside of one eye and secure with a few small stitches then take the needle through the head to the inside of the other eye and then back across to the first eye. Pull lightly on the thread to bring the eyes inward, repeat twice more (at least) going from eye to eye to make sure the shaping stitches are secure. To finish make several small stitches to secure the thread, take the needle back into the head and out again at any point and snip away the excess. Adjust any stuffing that was disturbed when working on the head then stuff the body. Close the opening in the back using ladder stitch or similar.



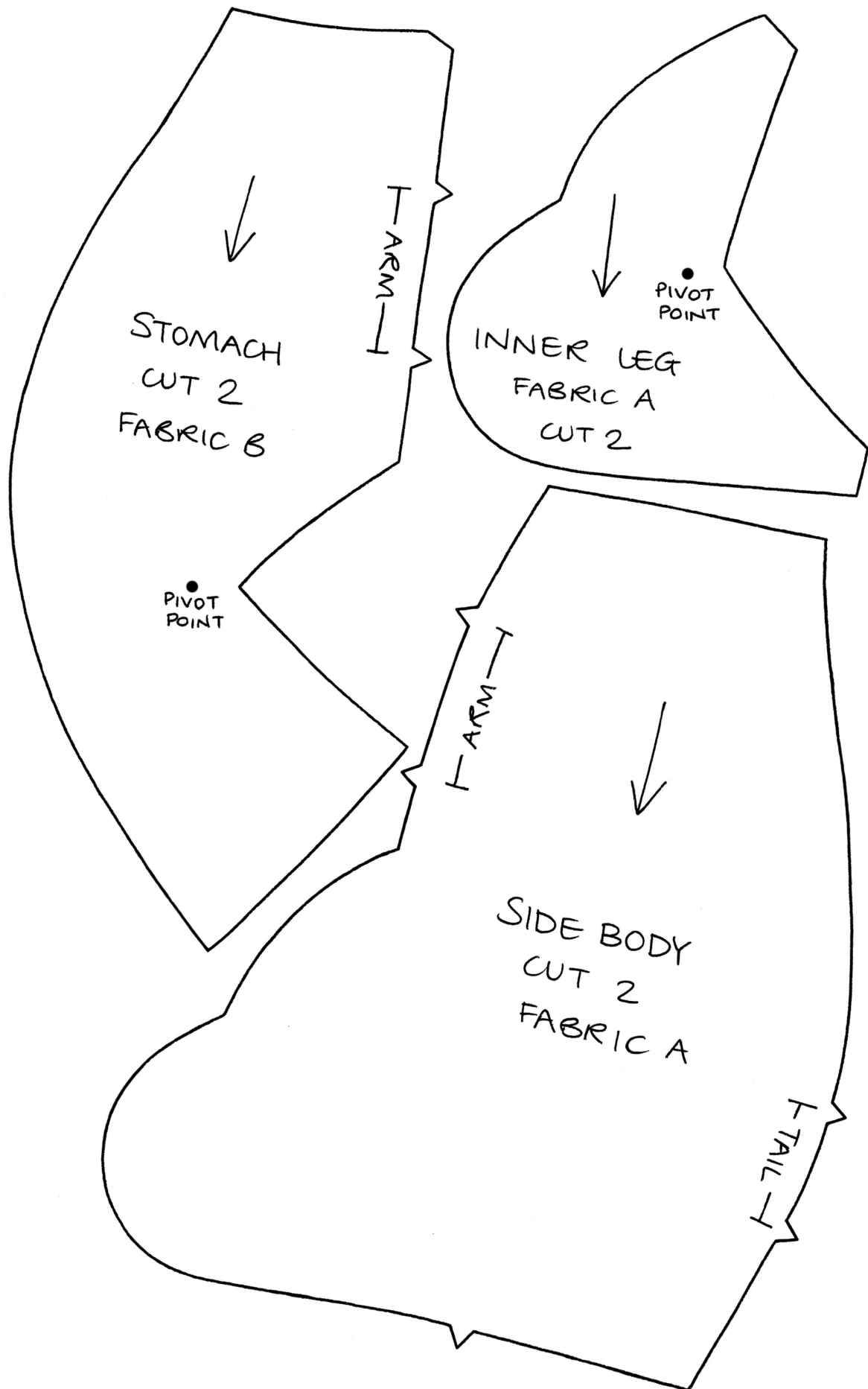
23. Firmly hand sew the tail to the back of the body to hold it in an upright position.





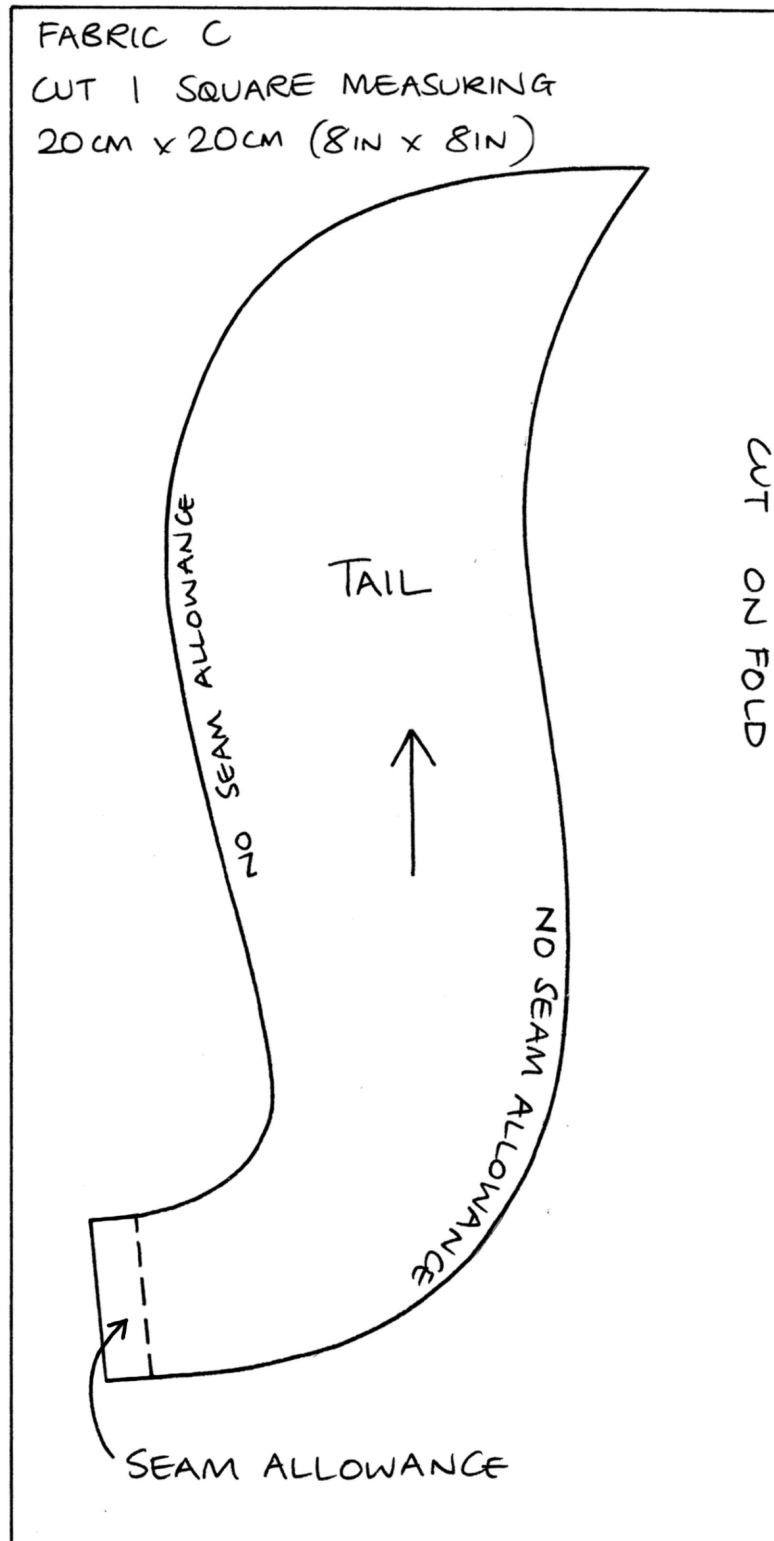








To make the tail cut out a square as directed below then see instructions for further information.



Check either size guide to ensure that the templates have printed at the correct size.

SIZE GUIDE

5cm  
SQUARE

SIZE GUIDE

2 INCH  
SQUARE



All rights reserved. The copyright for this design, images, templates and instructions belongs to Joanna Carter (Jo Carter), Two Owls Design. This pattern is for personal or non-commercial use only, individually hand-crafted items made from this pattern may be sold for charity. This pattern may not be reproduced, redistributed or re-sold in any form.  
Babies and children must always be supervised when playing with toys.