



Chubby Robin

By Jo Carter

YOU WILL NEED:

Brown fabric A (for main body): approx. 75cm x 45cm (29½in x 18in)
White fabric B (for chest): approx. 16cm (6½in) square
Red fabric C (for stomach): approx. 20cm (8in) square
Yellow fabric D (for beak and feet): approx. 30cm x 20cm (12in x 8in)
Scrap fabric E (for inner bag): approx. 16cm x 25cm (6½in x 10in)
Polyester toy filling
Black embroidery thread
Pair of 9mm black plastic safety eyes (optional)
Plastic beans

From your stash:

Matching sewing thread
Polyester toy filling
Basic sewing kit

FINISHED SIZE:

Approx: 22cm (8½in)

NOTES:

Seam allowance is 6mm (¼in), unless otherwise noted.

Templates include seam allowances, unless otherwise noted.

RST = right sides together

Arrows on the templates indicate print/pile direction for marking and cutting out.

As the wings and tail are sewn directly into seams it is advisable to sew over the joins to make sure they are well secured and to reduce the likelihood of them being pulled out.

Plastic beans are not suitable in toys for children under 3 years of age, as an alternative use toy filling throughout.

The safety eyes are not suitable for children under 3 years of age, as an alternative the eyes can be embroidered using the grey thread.

Remember: When the pattern specifies 'cut 2' or more of a pattern piece the template needs to be turned over halfway through marking out so that the second half are cut as mirror-images to the first.

When clipping always take care to avoid any stitching.

PREPARATION:

1. Begin by tracing and cutting out the templates. Next, draw out the pattern pieces onto the reverse of the fabric positioning them as closely together as possible and checking that they all fit before cutting. Cut out as follows:

From brown fabric A:

Cut 2 Side Face
Cut 2 Back Head
Cut 1 Chest
Cut 2 Side Body
Cut 4 Wing
Cut 2 Tail
Cut 1 Base
Cut 1 Inner Bag

From white fabric B:

Cut 1 Chest

From yellow fabric D:

Cut 1 Beak
Cut 2 Top Foot
Cut 2 Bottom Foot

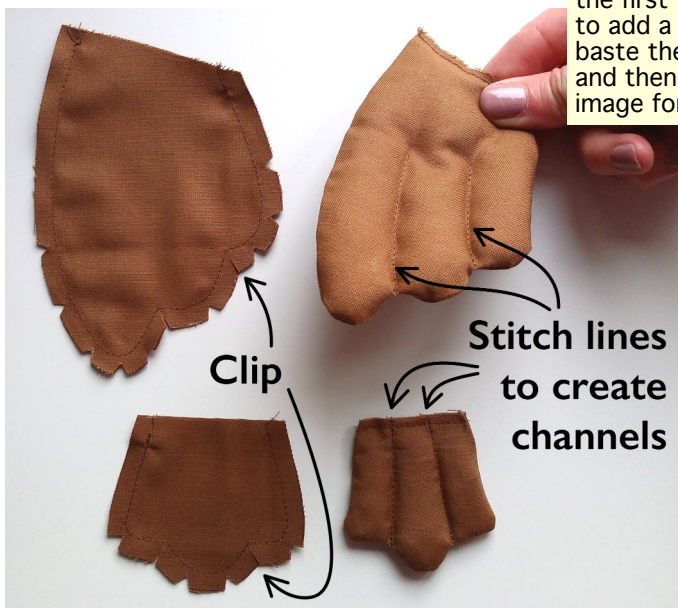
From scrap fabric E:

Cut 1 Inner Bag

From red fabric C:

Cut 1 Stomach

2. RST, place two mirror-image wing pieces one on top of the other and sew around the sides leaving the top open. Clip the seam allowance at the internal corners and clip 'V' shaped notches around the curves. Turn the right way out and press. Transfer the stitch line markings from the template onto the wings and stitch along them to create channels (reversing over the first few and last few stitches). Stuff the wing lightly just to add a little body and emphasise the channels and then baste the top edge together. Repeat to make the other wing and then make the tail in the same way (two tails shown in image for demonstration only).



3. RST, sew the face pieces together along the top front.



4. RST, sew the beak around the opening in the face pausing at each of the pivot points with the needle down through the fabric and lifting the presser foot to re-adjust the fabric to sew the next part of the seam.

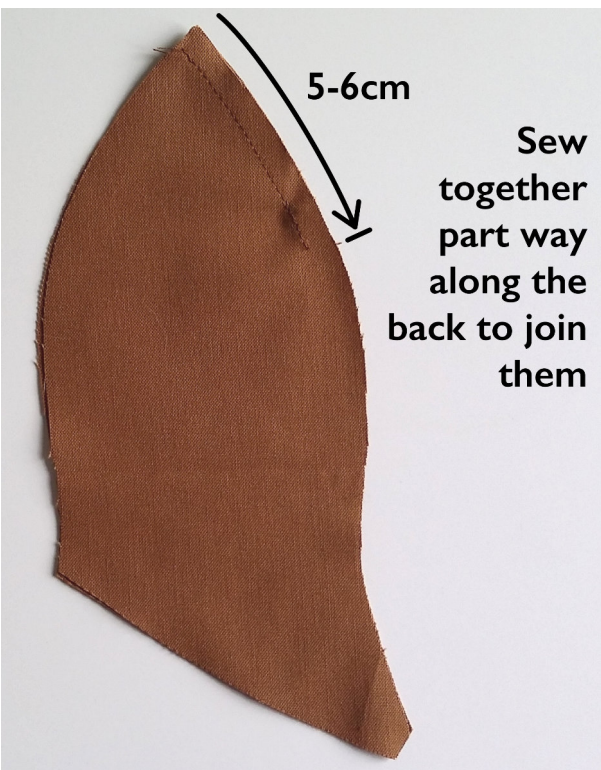
If using plastic safety eyes now is the time to fit them. Make the smallest holes possible through which to allow the shank of the eye in the side face pieces where marked. If using a thinner, non-plush fabric such as cotton it can be a good idea to make an equally small hole in the centre a 2cm (1in) square of felt (the felt square should be larger overall than the back of the eye) and fit this over the shank before fitting the back of the eye on top. Fit the backs (flat side down) onto the eyes as tightly as possible.

Safety Eyes With Thin Fabric:



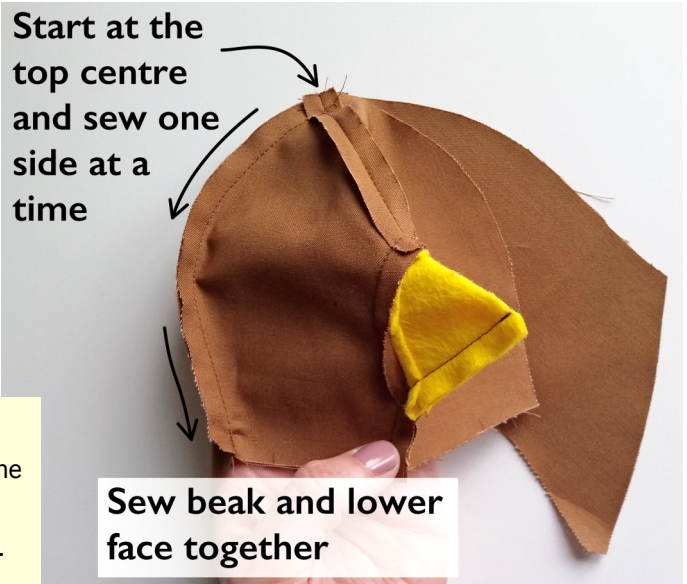
Fit felt square over shank on reverse of fabric

Tightly fit the back of the eye on top and the felt will then help to support the eye



Sew together part way along the back to join them

5. RST, place the back head pieces one on top of the other and sew together along the back from the top down for 5-6cm just to join them.



Sew beak and lower face together

6. RST line up the seam at the top of the face with the central seam in the back head and from this top point, sew the face and back head together down one side. Return to the top point and sew the remaining side together. Sewing the seam in two parts in this way is easier and helps to ensure a more even finish. Sew the beak and lower face together.



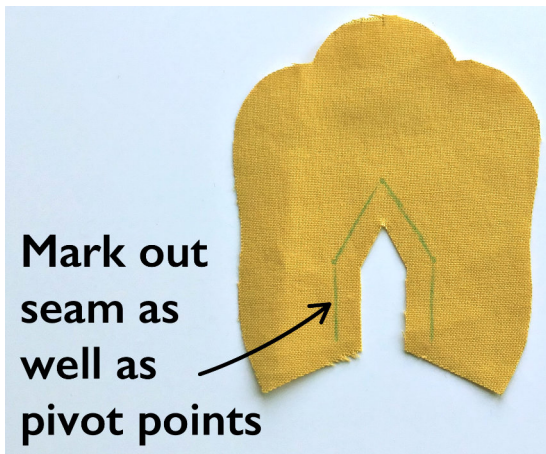
7. RST, sew the bottom of the chest to the top of the stomach.



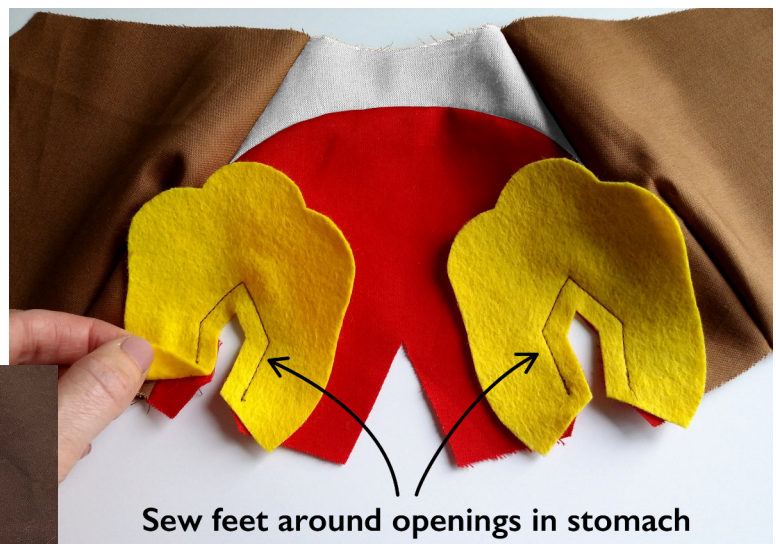
Sew stomach to side body

Close dart

8. RST, close the dart in the bottom of the side body tapering the top end. Sew a side body piece to its corresponding side of the stomach. Repeat for the other side.



Mark out seam as well as pivot points



Sew feet around openings in stomach



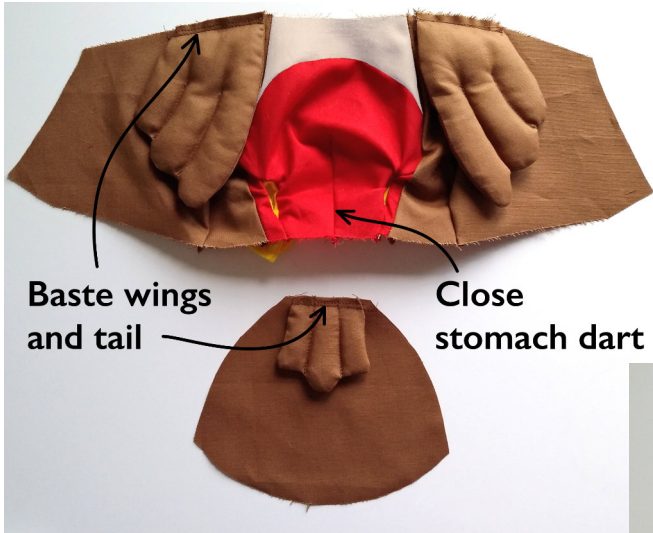
9. RST, sew the diamond-shaped opening in the top foot around one of the similar openings at the bottom of the stomach. To help the pivot points are marked on the template but it can also be helpful to mark out the entire planned seam in erasable pen as a guide to sew along. Sew the remaining top foot to the remaining opening. It is advisable to sew over this seam again to add strength at the top of the opening and prevent it ripping over time.



Sew bottom foot on...

...then sew back of foot together and the small section of stomach behind

10. RST, sew a bottom foot to a top foot. Sew the back 'heel' of the foot together and the small section of stomach behind it.



Baste wings and tail

Close stomach dart

11. RST, sew the dart in the bottom of the stomach together tapering the top end. Position a wing against the right side of the side body making sure that the wing is facing in the correct direction and baste in place where marked. Repeat for the other wing. Baste the tail to the right side of the base in the same way.

12. RST, sew the head to the body taking care to align the markers and seams.



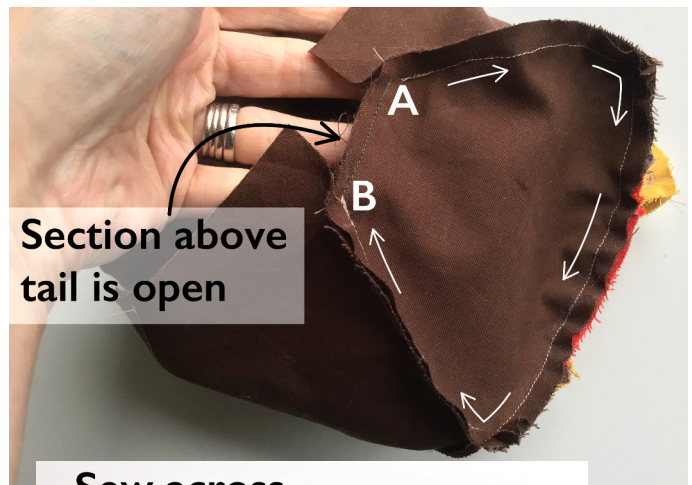
Sew head to body

13. There are two ways to approach sewing the base on the first is; RST, starting (and finishing) at the centre back of the body/base sew the base around the bottom of the robin...



Sew base on

...The second method is slightly easier particularly with plush fabric; RST, match point A on the side body with point A on the base and from this point sew the base to the body finishing at the same point on the opposite side (B). It will be A to B or B to A depending on whether the base is on top during sewing or the body, either way is fine. This will leave the back above the tail open. Next sew the back of the side body pieces together for 2-3cm (1in) just to join them, this will leave an opening in the back above the base. Lastly bring this opening together so that the bottom of side body pieces meet the base and sew across to fix the base and tail fully in place.



Section above tail is open



Sew lower back of body together

Side body



Sew across back



14. Sew the back of the robin's head together continuing along the back and finishing to leave a 10-12cm opening in the lower back.



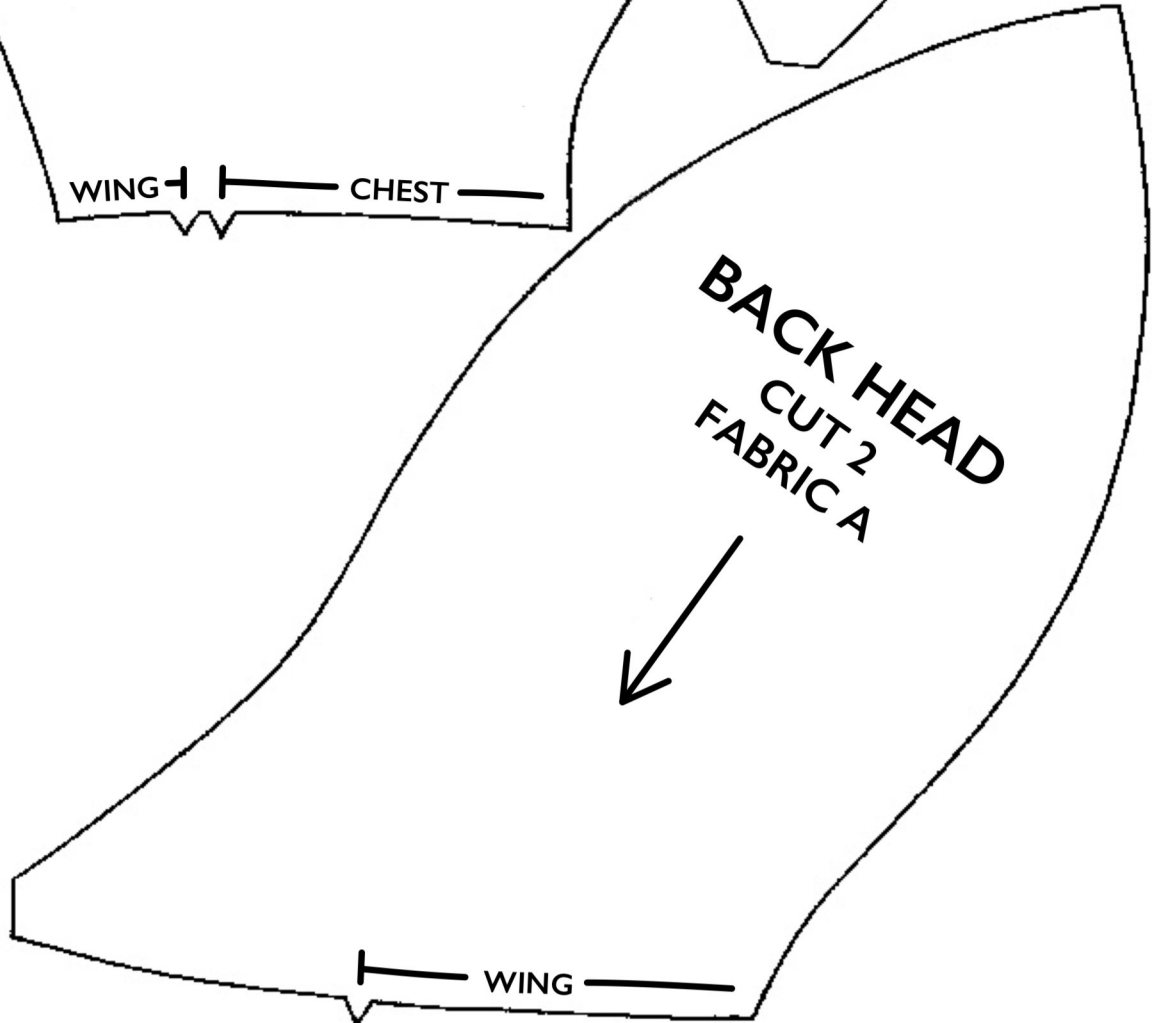
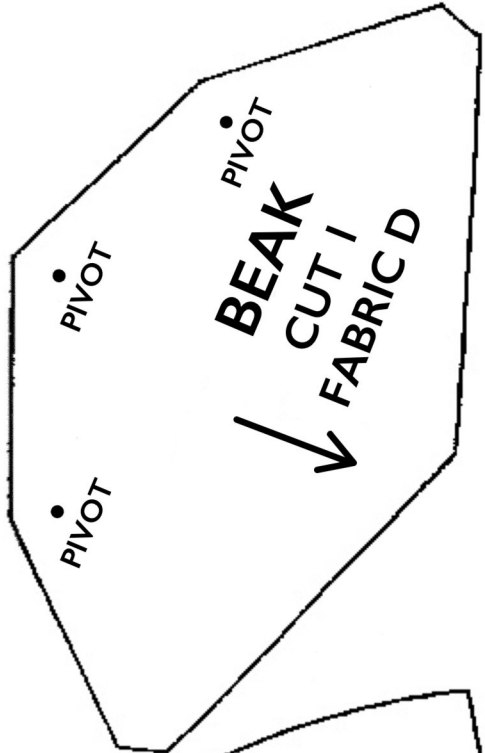
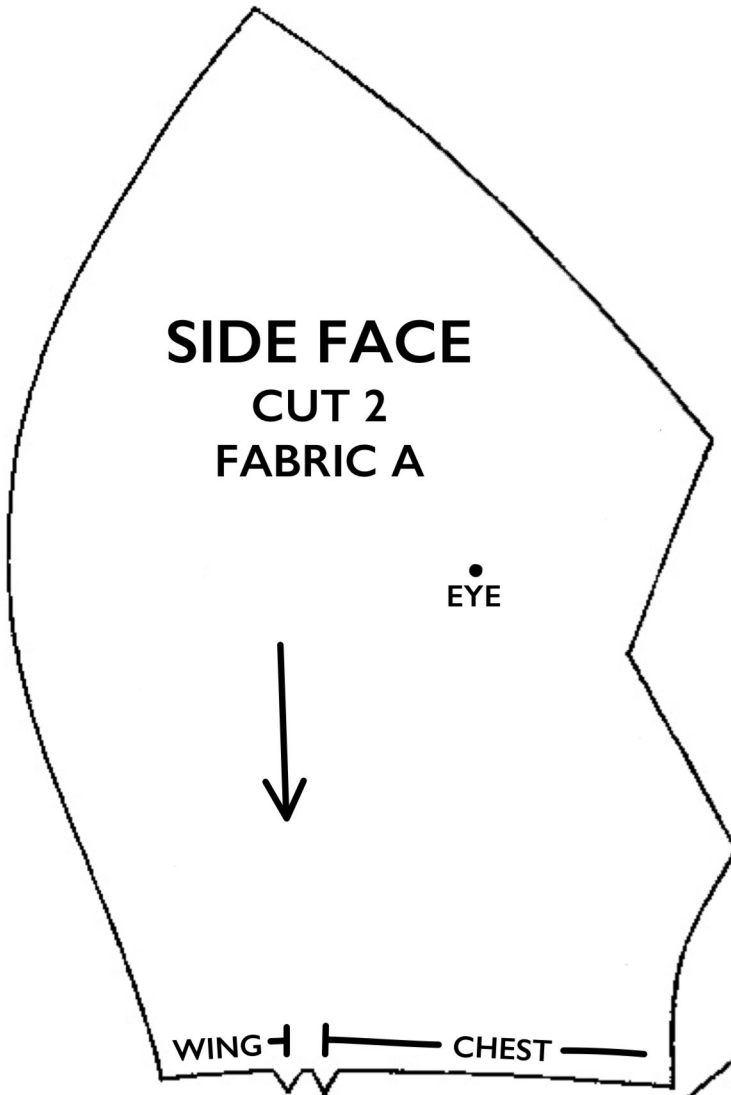
15. Fold the inner bag piece in half and sew each side together leaving the end opposite the fold open. Using a funnel fill the bag with plastic beans leaving the top 3cm of the bag empty. Sew the bag securely closed. Turn the robin the right way out and stuff the beak, head, feet and upper body. Fit the inner bag containing the beans into the base and adjust the stuffing around the bean bag adding more if required.

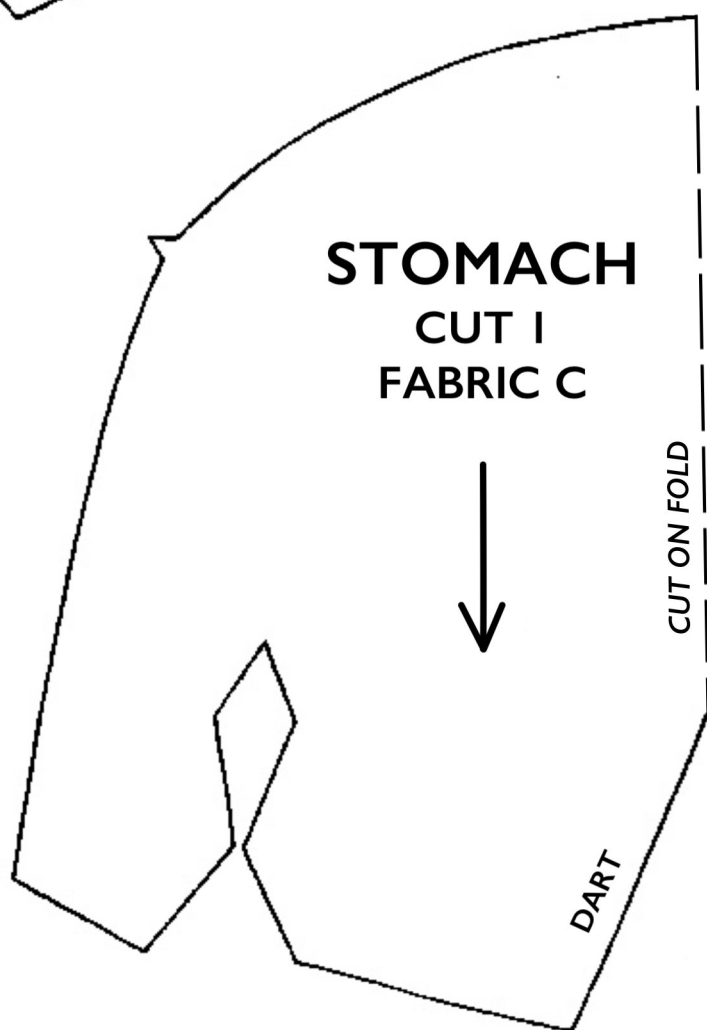
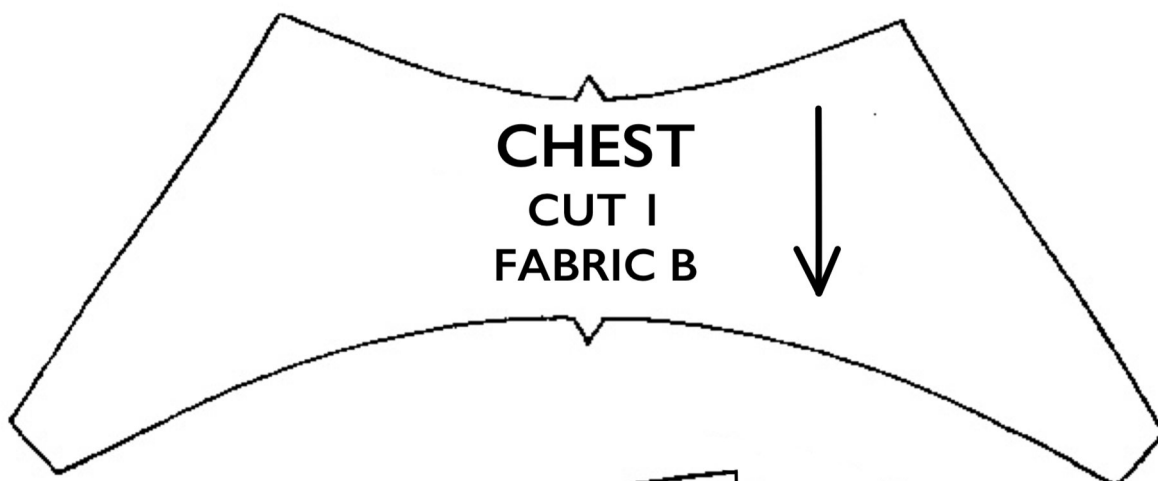


16. If embroidering eyes, mark the position of them with a water erasable pen. Using black thread, embroider each eye by backstitching a circle and filling in the centre with long vertical satin stitches.

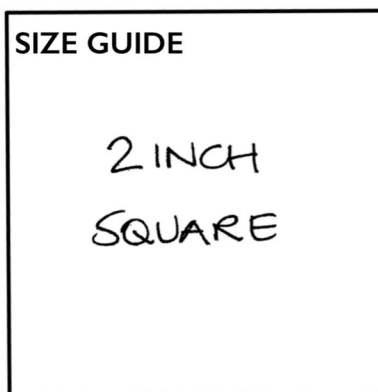
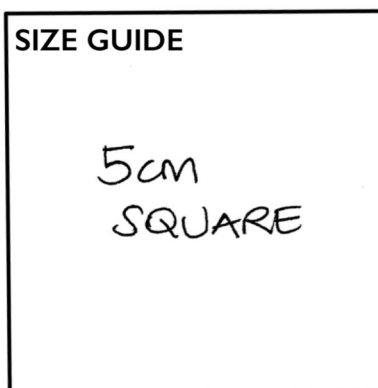


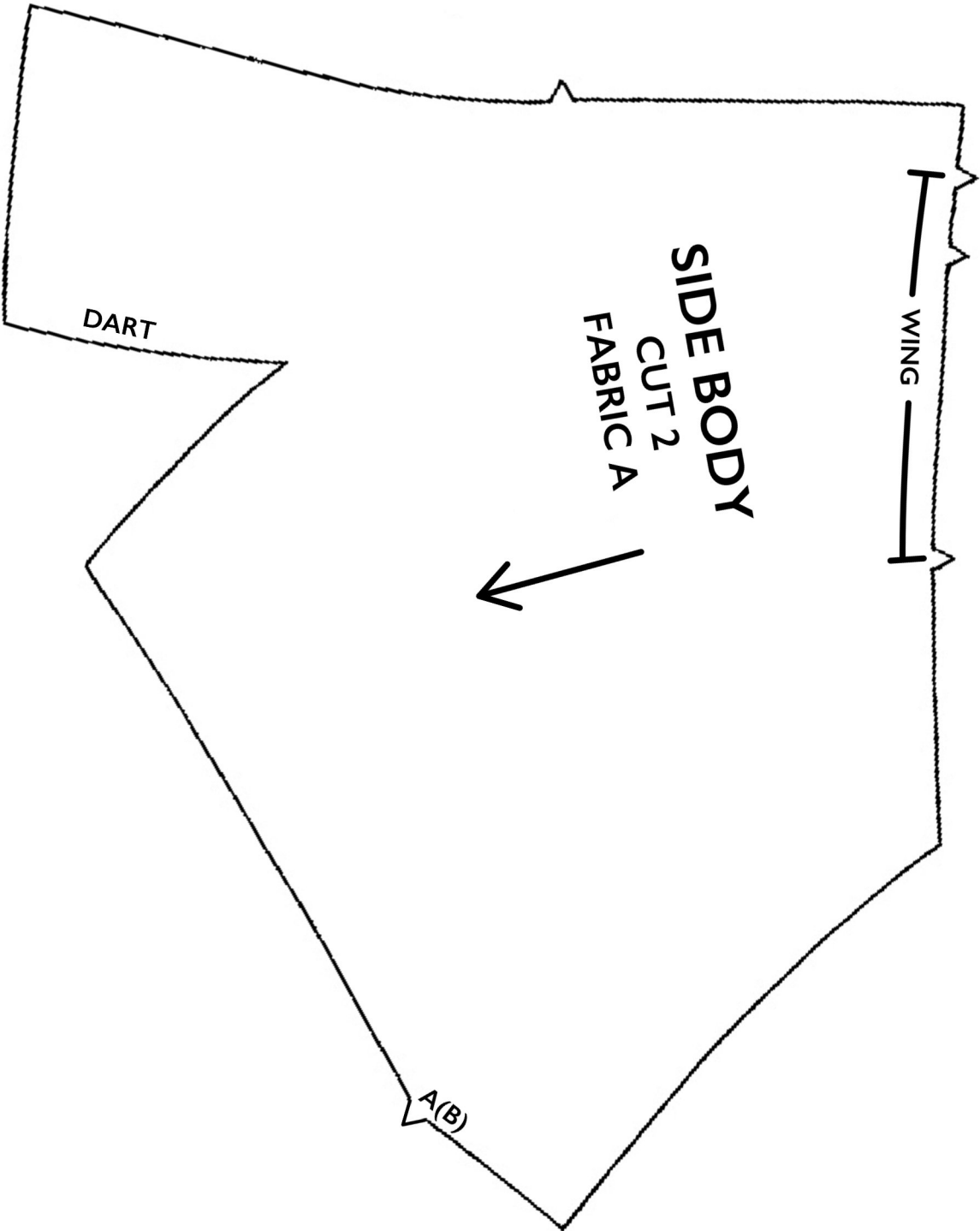
17. Using strong thread, take the needle through the bottom foot at what will be one bottom side of the centre 'toe' and out directly behind on the top foot. Make a few stitches through the foot to secure the thread and then bring the thread over the front of the foot and back through the bottom foot. Pull on the thread to tighten it, bring it over the foot once more and then secure the 'toe-stitches' by taking the needle through the foot a few times as at the start and then move over to make the second 'toe-stitch' on the other side of the centre 'toe'. Secure the thread and snip away the excess. Repeat for the other foot. Adjust any filling that has become disturbed and close the opening in the back using ladder stitch or similar.





Check either size guide to ensure that the templates have printed at the correct size.





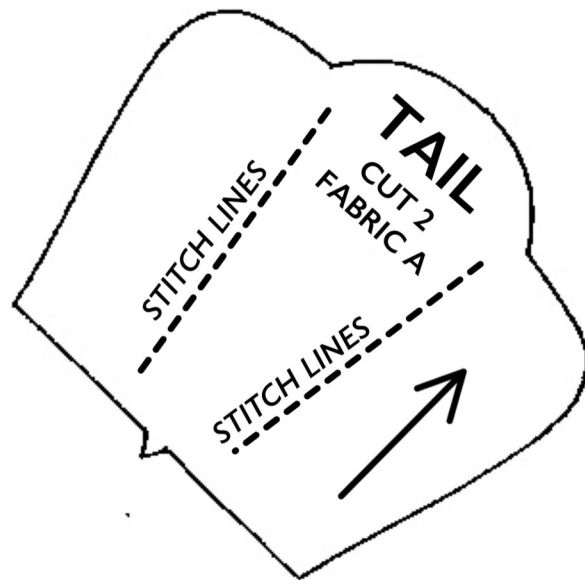
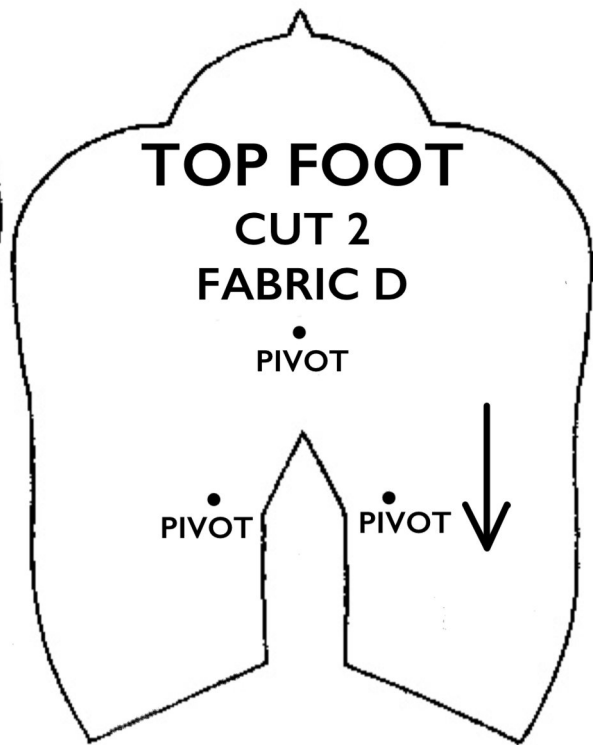
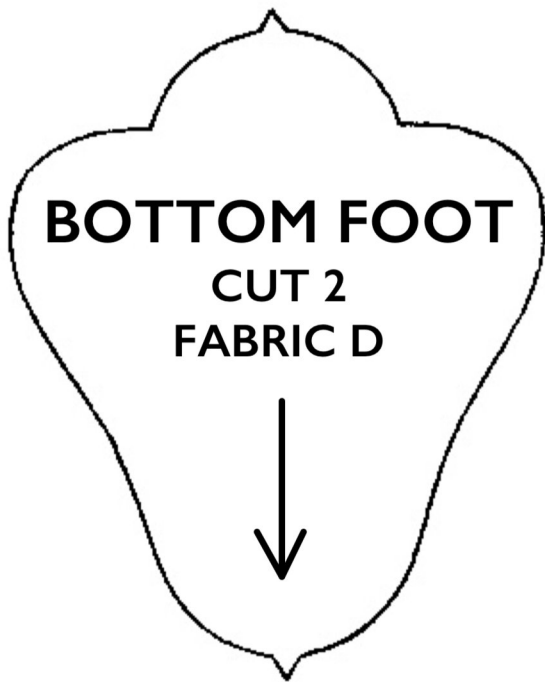
DART

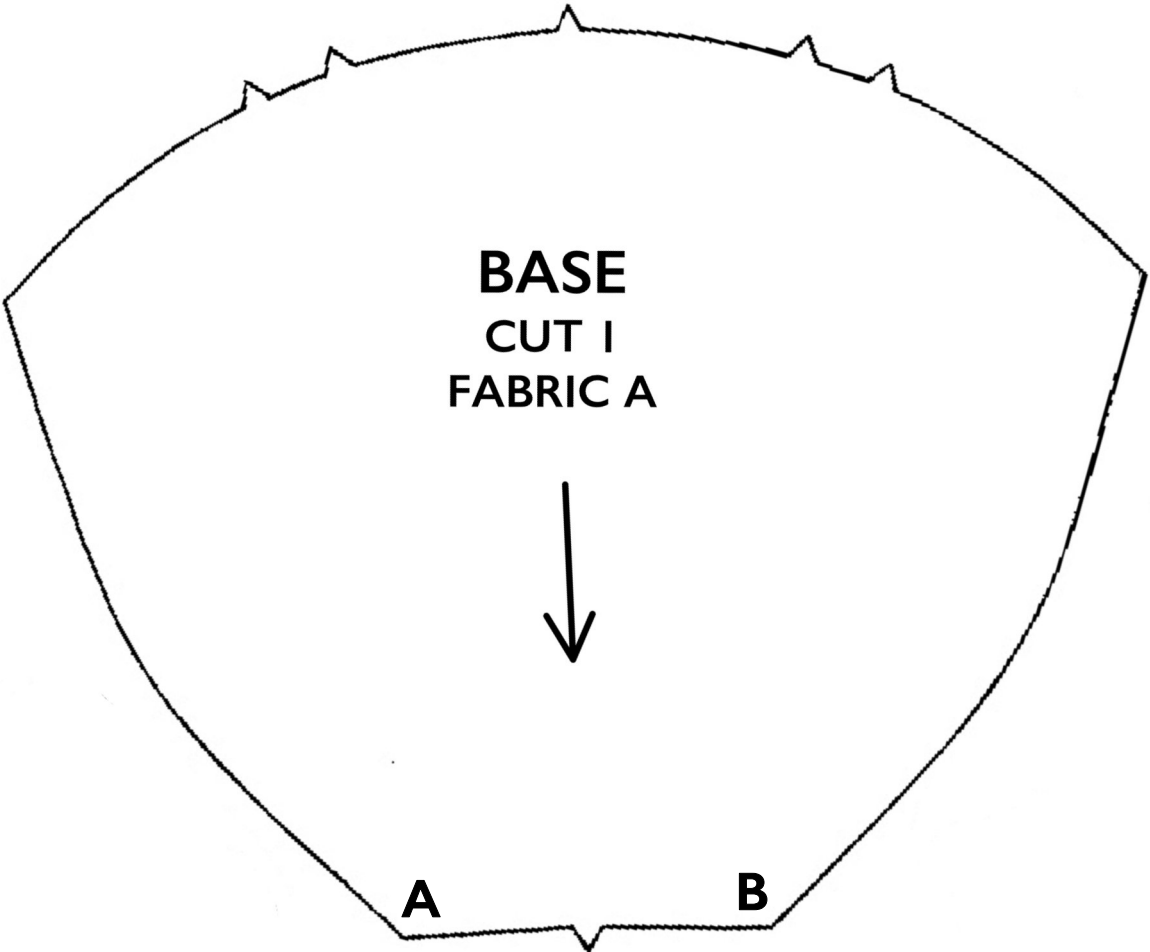
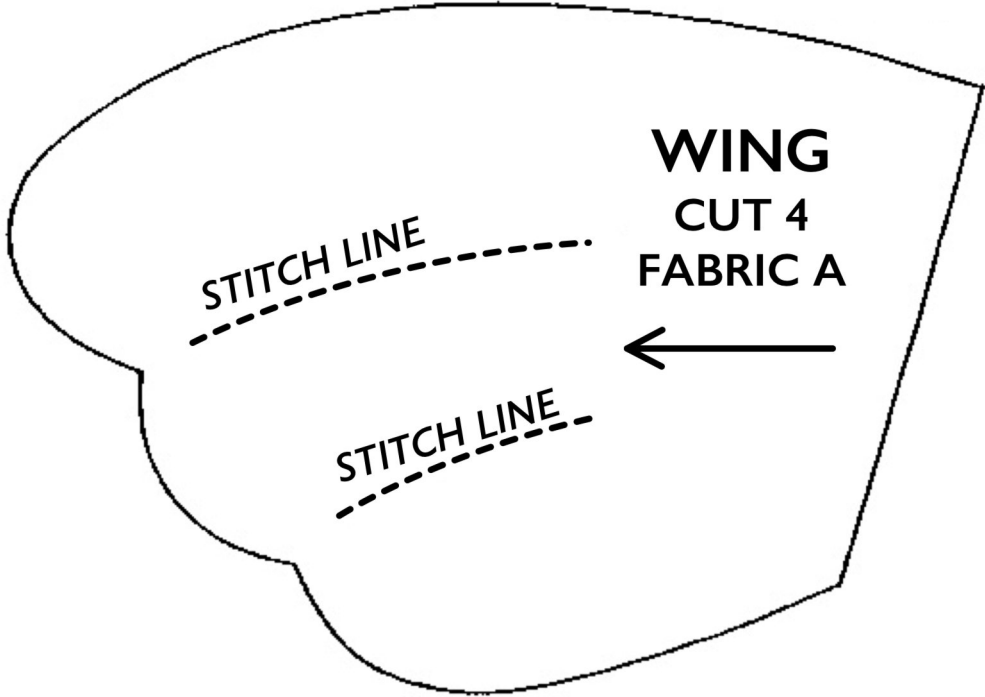
WING

SIDE BODY
CUT 2
FABRIC A



A(B)







All rights reserved. The copyright for the design, images, templates and instructions belongs to Joanna Carter (Jo Carter), Two Owls Design. This pattern is for personal or non-commercial use only, individually hand-crafted items made from this pattern may be sold for charity. This pattern may not be reproduced, redistributed or re-sold in any form.

Babies and children must always be supervised when playing with toys.