



Breezy Bear

by Jo Carter

YOU WILL NEED:

Fabric A (for main body): approx. 55cm x 50cm (21½in x 20in)

Fabric B (for nose): approx. 6cm (2½in) square

Fabric C (for front ears): approx. 16cm (6¼in) square

Black embroidery thread

From your stash:

Matching sewing thread

Polyester toy filling

Basic sewing kit

FINISHED SIZE:

Approx: 38cm
(15in) tall

Optional

Scraps of batting (wadding)/felt

Iron-on adhesive

Colour embroidery thread

Felt can seem like an easy fabric to sew with but if stretched it can distort out of shape. Flannel/brushed cotton makes lovely soft bears but backing it with woven fusible interfacing to strengthen it is recommended.

NOTES:

Seam allowance is 6mm (1/4in), unless otherwise noted.

Templates include seam allowances, unless otherwise noted.

RST = right sides together

Arrows on the templates indicate print/pile direction for marking and cutting out.

As the ears, arms, legs and tail are sewn directly into seams it is advisable to sew over the joins to make sure they are well secured and to reduce the likelihood of them being pulled out.

Remember: When the pattern specifies 'cut 2' or more of a pattern piece the template needs to be turned over halfway through marking out so that the second half are cut as mirror-images to the first.

When clipping always take care to avoid any stitching.

If using safety eyes instead of embroidering them it must be noted that safety eyes are not suitable for children under 3 years of age. Buttons are not recommended.

PREPARATION:

1. Begin by cutting out the templates. Next, draw out the pattern pieces onto the reverse of the fabric positioning them as closely together as possible and checking that they all fit before cutting. Cut out as follows:

From fabric A:

Cut 2 Ear

Cut 1 Middle Face

Cut 2 Side Face

Cut 1 Back Head

Cut 4 Arm/Leg

Cut 1 Body cut on fold - see tip sheet

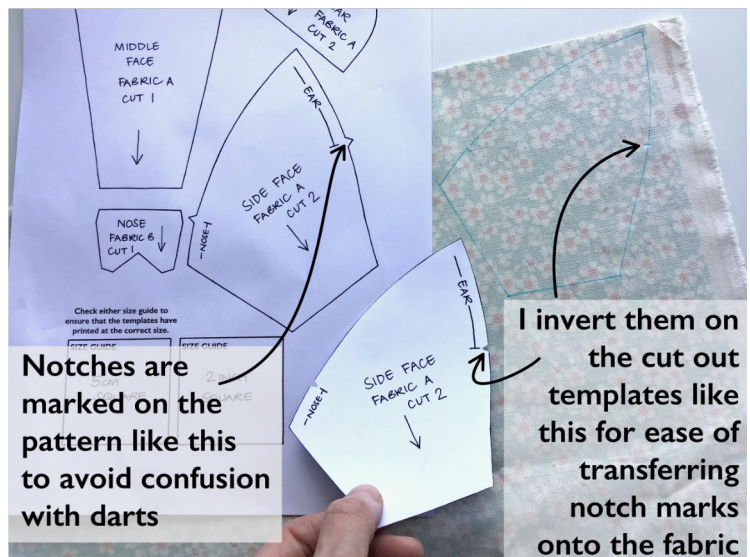
Cut 1 Tail

From fabric B:

Cut 1 Nose

From fabric C:

Cut 2 rectangles that are larger overall than the ear piece, roughly 8cm x 6cm (3¼in x 2½in)



2. RST, sew the top of the nose to the bottom of the middle face piece.

Sew nose to middle face



Sew side face pieces to middle face



3. RST, sew a side face piece to its corresponding side (the template shows which part attaches to the side of the nose) of the middle face. Repeat to attach the other side of the middle face.

**Sew following
the edge of
the ear**



4. RST, place an ear piece on top of one of the front ear rectangles. If using a thin fabric such as cotton, if preferred to give the ear some padding both pieces can be placed on top of a scrap of batting (wadding) or felt. Sew together following the curved edge of the properly cut out ear, pausing every few stitches with the needle down through the fabric and lifting the presser foot to adjust the fabrics to before sewing the new few stitches. Cut out following the edges of the ear piece and clip 'V' shaped notches (taking care not to get too close to the stitches) in the seam allowance around the curve. Repeat to make the other ear.

**For a
padded ear,
place fabric
on top of
batting...**



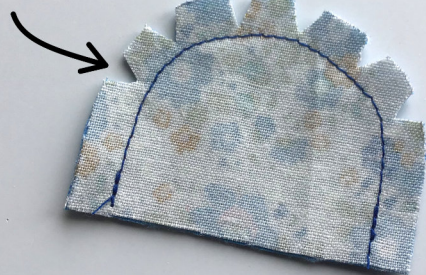
**Cut
out**



**...and sew
through
all three
layers**



**Clip avoiding
the stitches**



**Baste ears in
place**

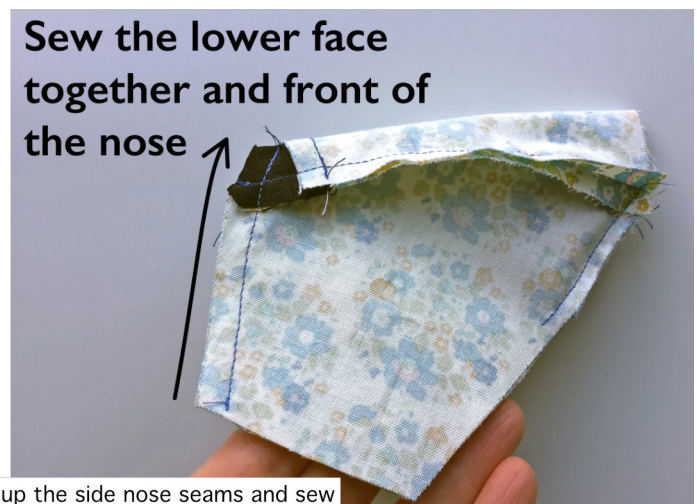


Baste



6. Turn the ear the right way out and roll the seam edge between your fingers to fully turn it out. If stuffing the ear is preferred to using batting or leaving it empty, add a small amount of filling now. Baste the bottom edge of the ear together (and trim any overhang of batting). Repeat for the other ear.

**Sew the lower face
together and front of
the nose**



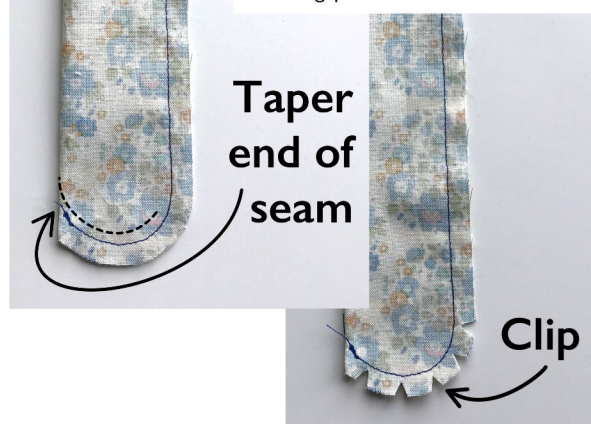
6. With the front of an ear against the right side of the face baste into position where marked. Repeat for the other ear.

7. RST, bring the front of the face together lining up the side nose seams and sew together between the bottom neck edge up along the front of the nose tapering the end of the seam at the nose so that the finished nose will not be too 'pointy'. The nose essentially has a small dart in it but this method makes it larger and easier to handle and means there isn't a 'Y' seam at the bottom of the nose.

8. RST, line up the notch at the top centre of the face with the notch at the top centre of the back of the head and from this point sew one side of the head together. Return to the top centre point and sew the remaining side together. Sewing the seam in two parts in this way is easier and helps to ensure a more even finish.



9. RST, fold an arm/leg piece in half lengthways and sew together along the side and around the rounded end, tapering the end of the seam around to the fold. Clip 'V' shaped notches in the seam allowance around the curve. Repeat for the other 3 arm/leg pieces.



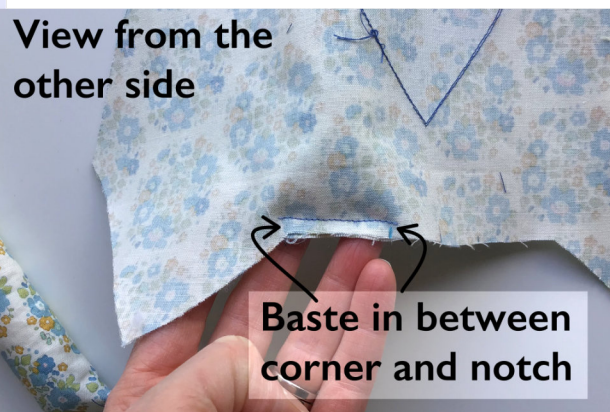
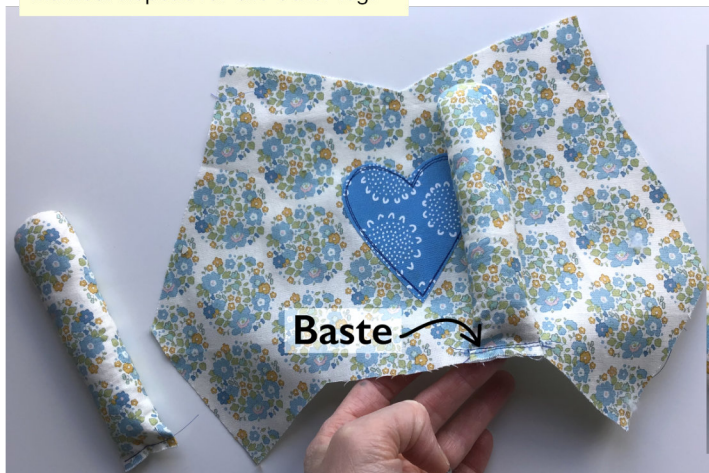
10. Turn the arms and legs the right way out and stuff using a thin blunt tool such as the blunt end of a skewer or a cross-head screwdriver. Leave the top 2-3cm empty of stuffing and baste the ends closed so that the seam is positioned along one side of the arm/leg.



11. If any embellishment such as applique or embroidery is to be added to the body then add it now, the template can be used to help find the centre of the body. Raw-edge applique fused in place with iron-on adhesive and then stitched down with a straight or decorative stitch works well.



12. With the seam side of the leg facing away from the centre of the body, baste a leg in position where marked. Repeat for the other leg.



13. RST, fold the body piece in half and sew the back bottom edge together.



Line up the bottom of body and sew one side at a time



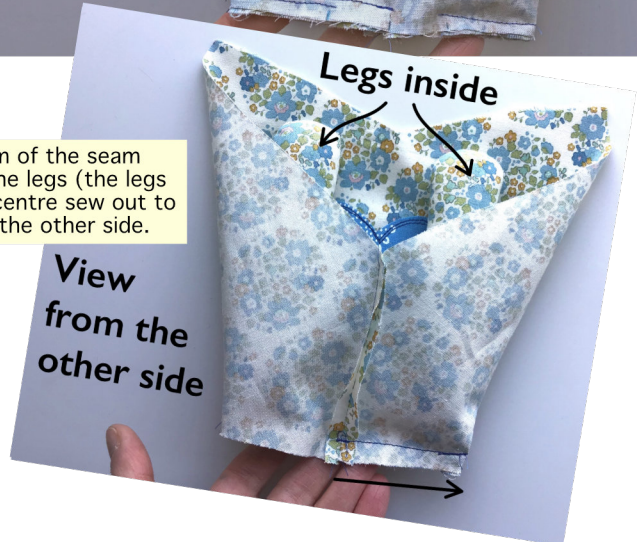
14. RST, reposition the body piece to bring the bottom of the seam made in step 12 to meet the central notch between the legs (the legs need to be inside the wrong-way-out body). From the centre sew out to one side sandwiching the leg fully in place. Repeat for the other side.



Baste arms in place



View from the other side



15. With an arm against the right side of the body and the seam side of the arm facing the back of the body, baste in position where marked. Repeat for the other arm.

Sew head to body

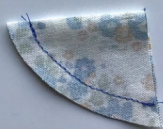


With batting

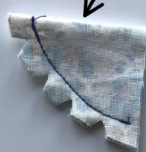


16. RST, sew the bottom of the head to the top of the body.

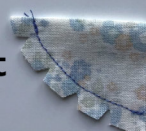
Without batting



With batting



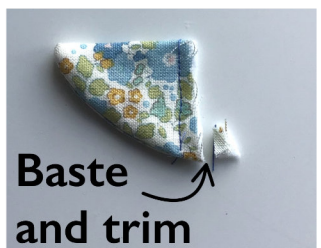
Without batting



Take care when trimming the batting along the fold

Clip curved side

Baste and trim

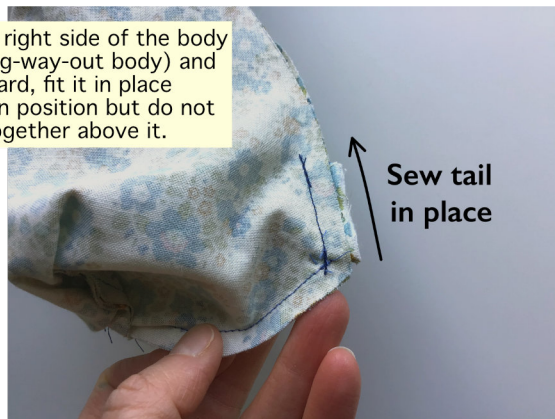


17. RST, fold the tail in half and if using batting place the tail on top. Sew along one side leaving the straight end open. If using batting etc trim away the overhang taking care when cutting next to the folded side and then clip 'V' shaped notches around the side. Turn the right way out, baste the end closed and trim away any overhanging seam allowance etc.

Seam side of tail at bottom

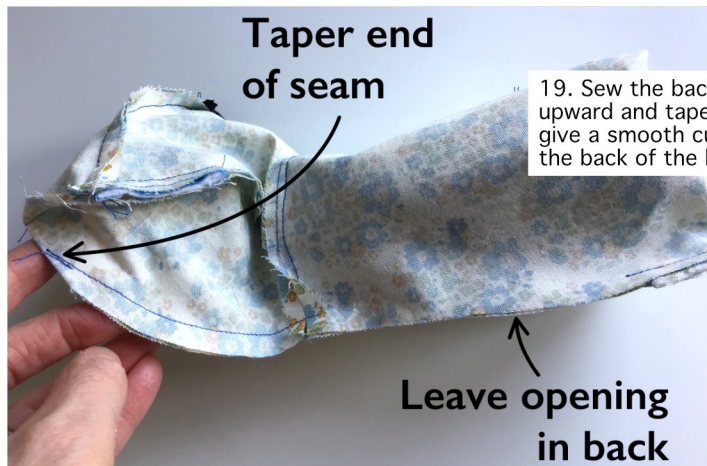


18. With the tail against the right side of the body (it should be inside the wrong-way-out body) and the seam side facing downward, fit it in place where marked. Sew the tail in position but do not sew any more of the back together above it.



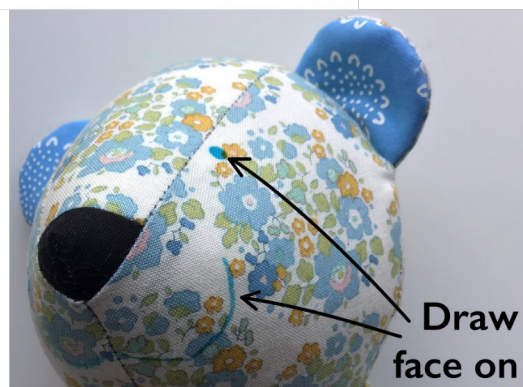
Sew tail in place

Taper end of seam



19. Sew the back of the head from the bottom neck seam upward and tapering the seam into the fold at the top to give a smooth curve. This will leave an 8-10cm opening in the back of the bear.

Leave opening in back



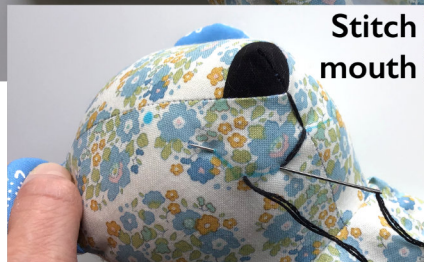
Draw face on

Take needle into bear through opening in body



20. Turn the bear the right way out and stuff the head only. Divide a piece of embroidery thread in half to give 3 strands, thread it through a long needle and double it over and knot the end so that it is back to 6 strands again. Use an erasable fabric pen to draw the facial features onto the bear's face (it may take 2-3 attempts before drawing a face you're happy with). Take the needle through the opening in the back of the body taking care not to catch it in any fabric and into the head and out at the bottom of the nose. Pull on the thread so that the knot is drawn as far into the head as it will go and the knot is buried in the stuffing. Backstitch the mouth following the pen marks and once done make a couple of small stitches at the base of the nose so they are hidden and before drawing the loop of the last stitch fully closed thread the needle through it to form a knot. Take the needle into the head at the bottom of the nose and out again anywhere before snipping off the excess (this will mean a long tail of thread will be held inside the head reducing the likelihood of the knot working loose).

Stitch mouth



Thread needle through stitch before it closes

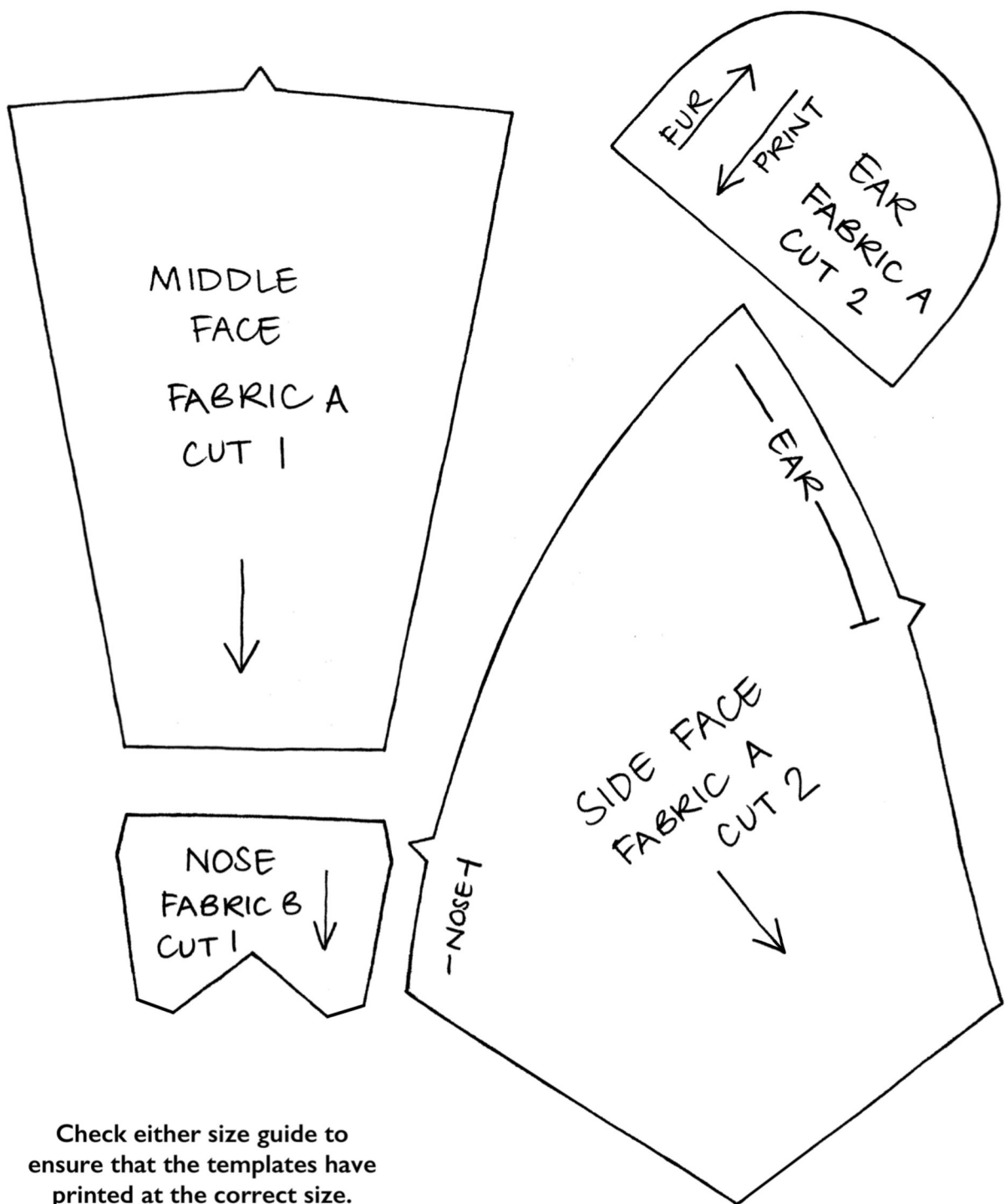


Take needle back and to between eyes



Thread the needle again as before and go in through the back of the body and out at the eye, embroider an eye on by building up horizontal stitches. Once the first eye is done go straight through the head to the other eye and embroider it in the same way and then go back through the head to the first and then back again to the second and pull lightly on the thread to draw the eyes inward. Finish the thread as before with the mouth. Adjust any stuffing in the head that became disturbed when embroidering the face and then stuff the rest of the body. Using cotton thread in a co-ordinating colour ladder-stitch the opening in the back of the body closed.





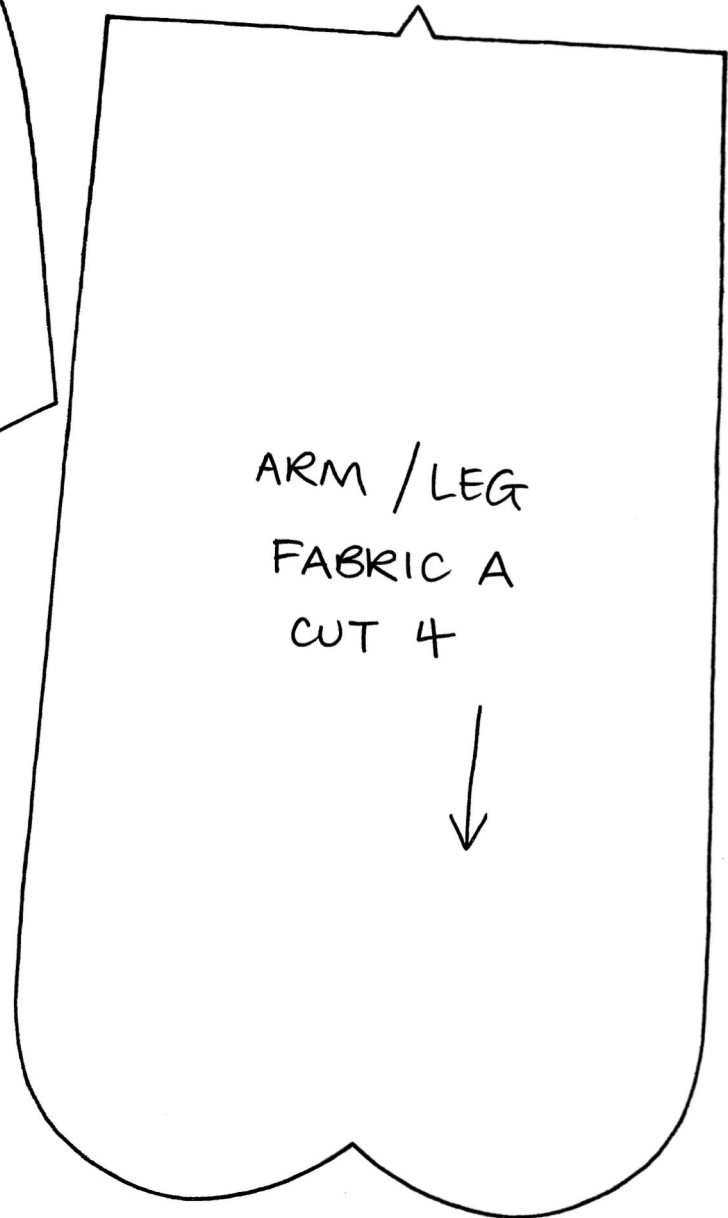
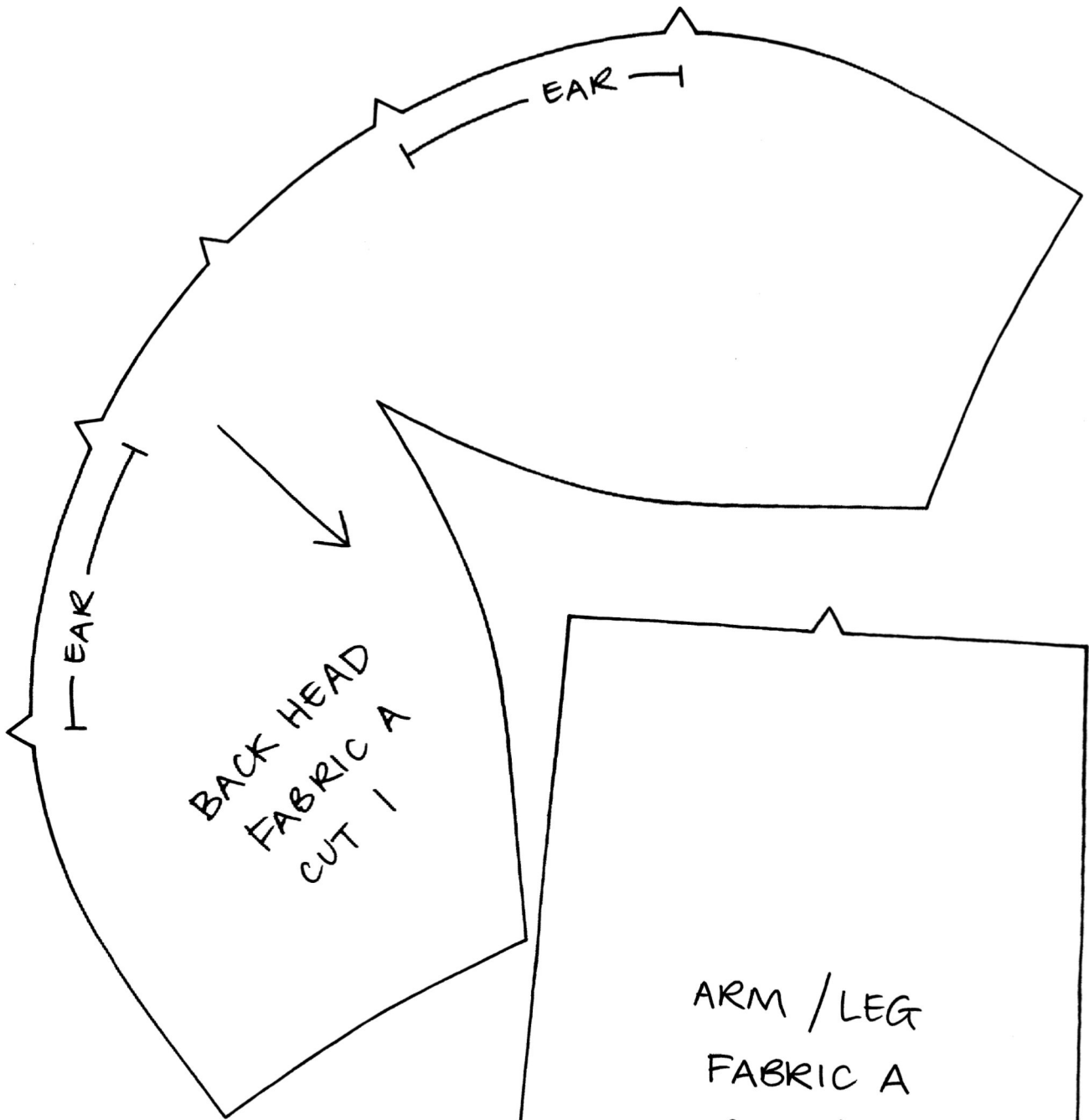
Check either size guide to ensure that the templates have printed at the correct size.

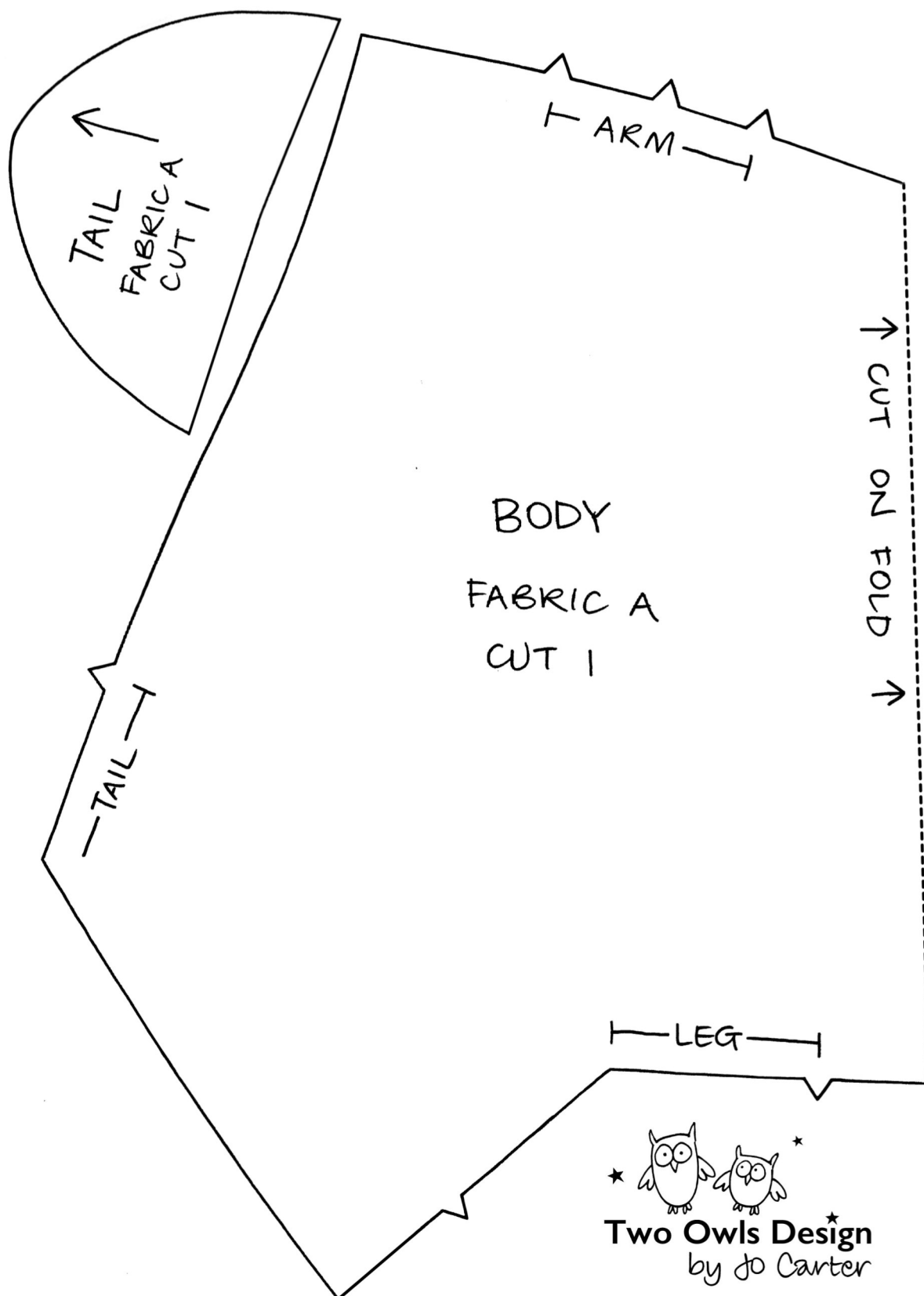
SIZE GUIDE

5cm
SQUARE

SIZE GUIDE

2 INCH
SQUARE





All rights reserved. The copyright for this design, images, templates and instructions belongs to Joanna Carter (Jo Carter), Two Owls Design. This pattern is for personal or non-commercial use only, individually hand-crafted items made from this pattern may be sold for charity. This pattern may not be reproduced, redistributed or re-sold in any form.
Babies and children must always be supervised when playing with toys.